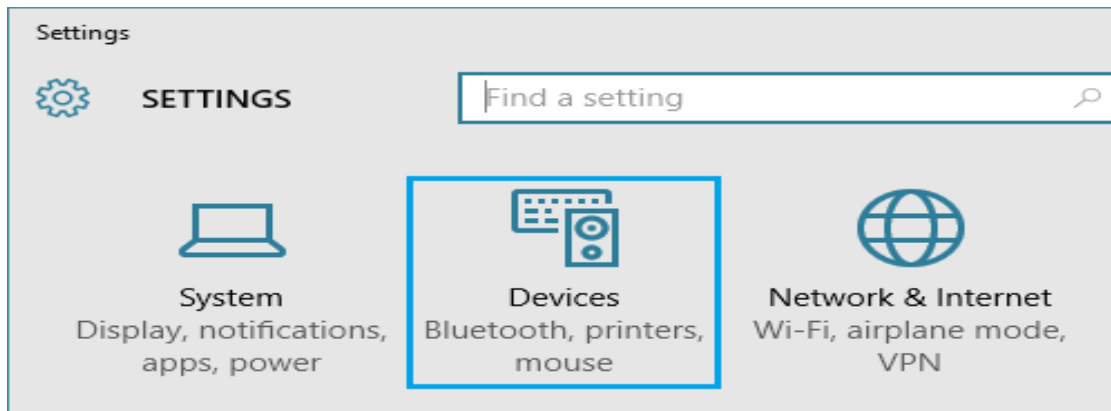
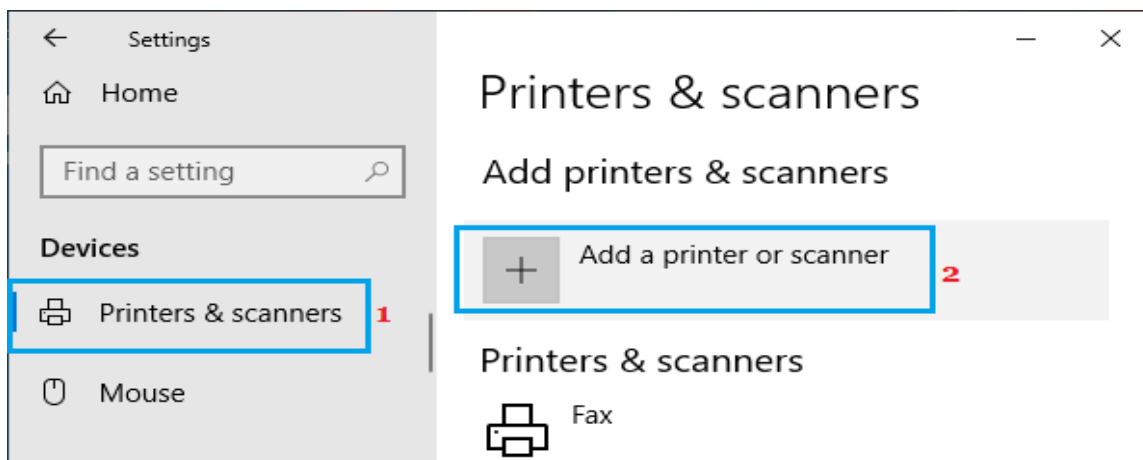


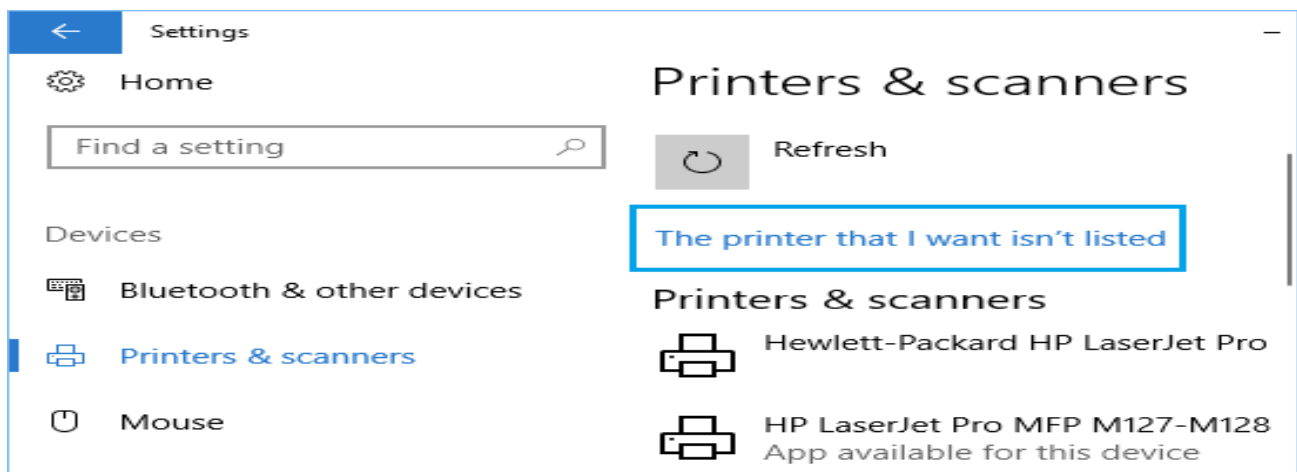
1. Open Settings on your computer and click on Devices.



2. On the next screen, click on Printers & Scanners in the left pane. In the right-pane, click on Add a Printer or Scanner option.



3. As Windows starts searching for Printers, click on The Printer that I want isn't listed.



4. On the next screen, select Add a Printer Using TCP/IP address and click on the Next button.

← Add Printer

Find a printer by other options

☐ My printer is a little older. Help me find it.

☐ Select a shared printer by name

Browse...

Example: \\computername\printername or
http://computername/printers/printername/.printer

☒ Add a printer using a TCP/IP address or hostname

☐ Add a Bluetooth, wireless or network discoverable printer

☐ Add a local printer or network printer with manual settings

Next Cancel

5. On the next screen, enter Hostname or IP Address of the Printer and click on the Next button.

← Add Printer

Type a printer hostname or IP address

Device type: Autodetect

Hostname or IP address:

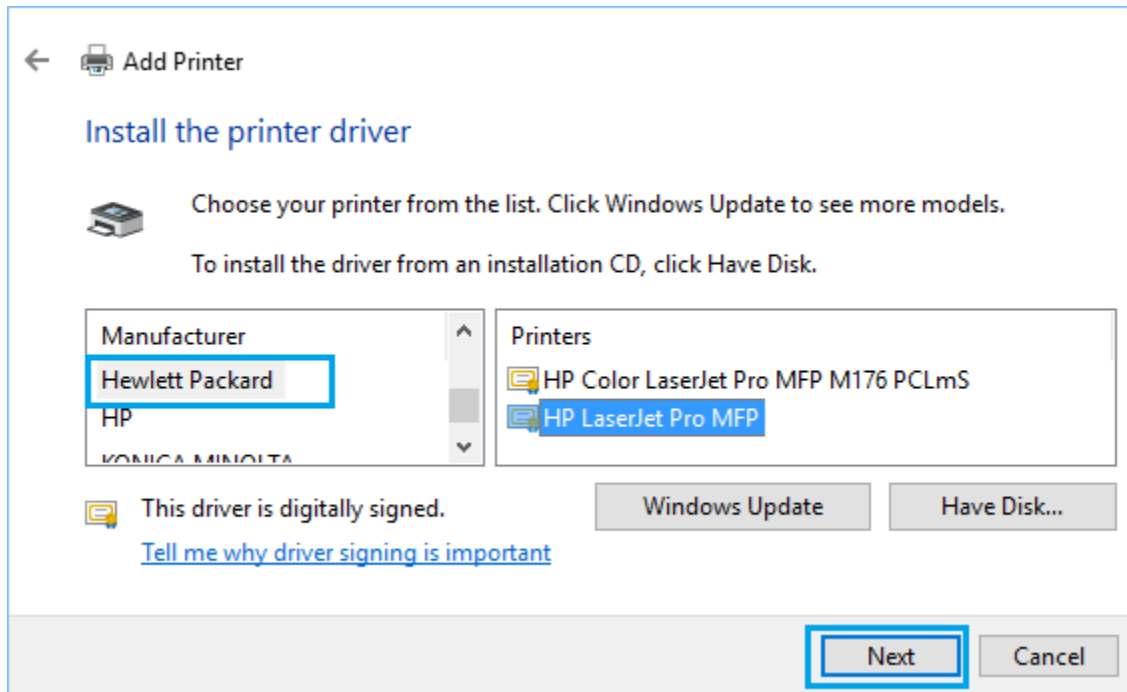
Port name:

☒ Query the printer and automatically select the driver to use

Next Cancel

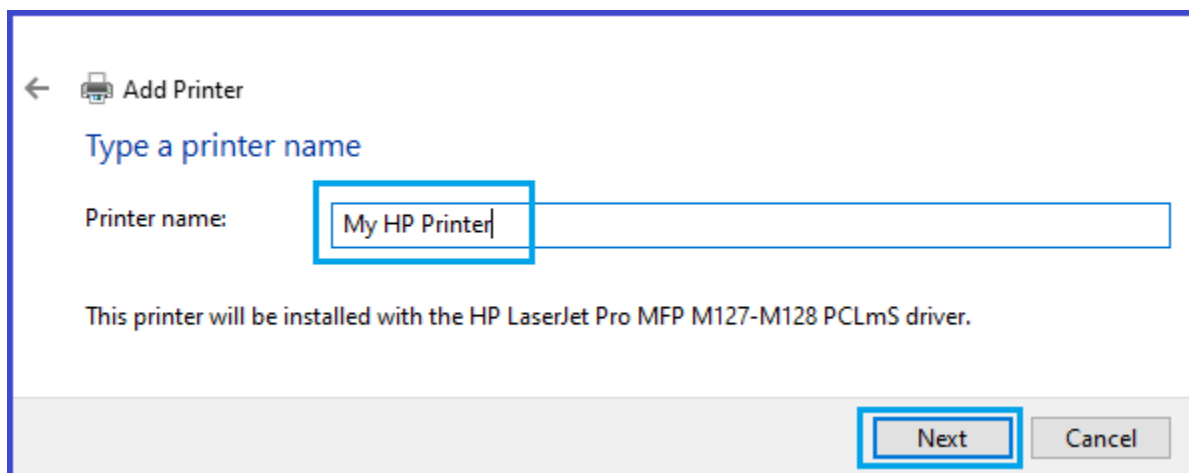
6. Windows should be able to find the printer if the printer is on and it is properly configured. If not, you may be prompted to provide more information about the printer.

7. On the next screen, select the Printer Manufacturer in the left-pane. In the right-pane, select your Printer model and click on the Next button.



Note: Click on Windows Update button, in case your printer is missing in the list and you want to see more models.

8. Type the Name for the Printer and click on Next.



9. Select whether you want to Share the printer or not and click on Next.

The screenshot shows the 'Add Printer' window with the 'Printer Sharing' section. The title bar says 'Add Printer' with a printer icon. Below the title, the section is 'Printer Sharing'. A message states: 'If you want to share this printer, you must provide a share name. You can use the suggested name or type a new one. The share name will be visible to other network users.' There are two radio button options: 'Do not share this printer' (selected) and 'Share this printer so that others on your network can find and use it'. Below these are three text input fields: 'Share name:' with 'My HP Printer' entered, 'Location:', and 'Comment:'. At the bottom right, there are 'Next' and 'Cancel' buttons. The 'Next' button is highlighted with a blue border.

10. On the next screen, you can Print a test page a

The screenshot shows the 'Add Printer' window with the 'You've successfully added My HP Printer' section. The title bar says 'Add Printer' with a printer icon. Below the title, the section is 'You've successfully added My HP Printer'. There is a checkbox labeled 'Set as the default printer' which is checked. A message states: 'To check if your printer is working properly, or to see troubleshooting information for the printer, print a test page.' Below this message is a 'Print a test page' button. At the bottom right, there are 'Finish' and 'Cancel' buttons. The 'Finish' button is highlighted with a blue border.

nd

click on Finish.